



**Shenley Brook End Sixth Form
Summer transition tasks for
A level Geography**

Due date Monday 16 September 2024

Year 12 AQA A Level Geography

Objectives: To develop enquiry skills and a wider understanding of how different factors can affect the growth of town

Task: Create a report in response to the following question:

How is Milton Keynes Changing?

- Primary data collection
- Secondary data collection
- Map skills
- Annotated photographs and maps
- Analysis of primary and secondary data
- Choropleth mapping
- Scatter graph

Your report must demonstrate the following knowledge:

- A brief history of MK from 1967 onwards.
- An explanation of how population has changed in terms of both size and structure.
- What are the socio-economic characteristics of the people of MK?
- Are the characteristic of the people of MK changing in terms of wealth, age and ethnicity?
- How is MK changing in order to provide for its population in terms of expansion, housing provision, employment provision, leisure provision, public transport, etc?
- What does the future have in store for MK? Further expansion to the west?
- Your conclusions on how MK has changed.

The transition task will be graded and contribute towards your first report.

Criteria

AO1- knowledge what information is in your report, how well researched is it?

AO2- analysis what are your findings and how do you explain and evaluate them

AO3- fieldwork techniques do you use a range of data collection and presentation skills to produce your report

Resources/Research

[2011 Census - Office for National Statistics \(ons.gov.uk\)](https://ons.gov.uk)

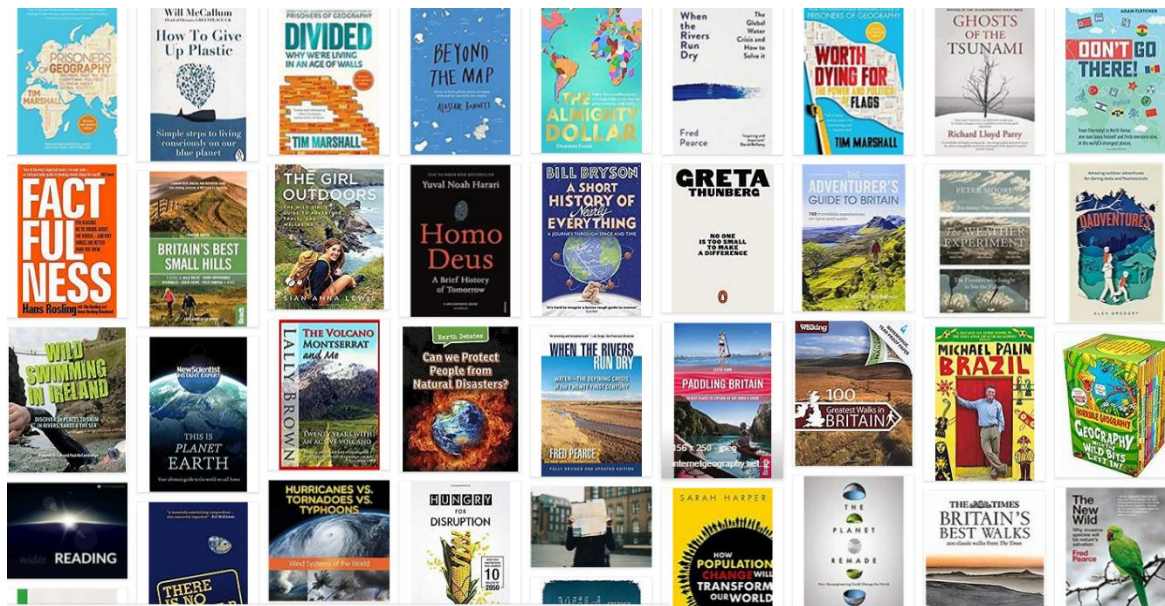
[Heritage of MK - Milton Keynes Council \(milton-keynes.gov.uk\)](https://milton-keynes.gov.uk)

[History of Milton Keynes \(mkinspire.org.uk\)](https://mkinspire.org.uk)

[Major Development Sites - Milton Keynes Council \(milton-keynes.gov.uk\)](https://milton-keynes.gov.uk)

[Home | Milton Keynes Citizen](#)

Wider Reading



Submission Date ^{16th} September